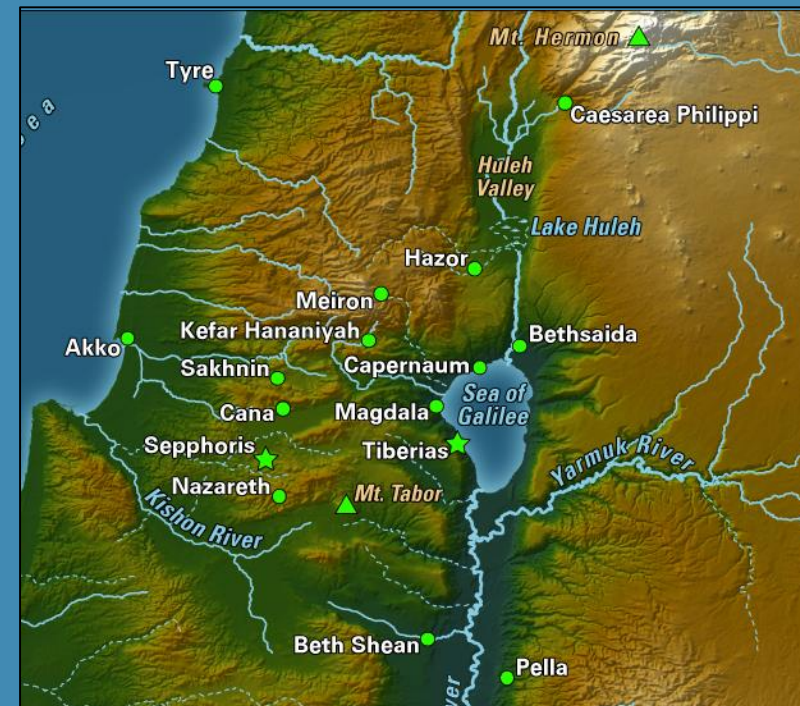


# THE JEWISH FOUNDATIONS OF THE NEW TESTAMENT



Class II – The Land & the Bible (Part B)

January 21, 2017



# An Introductory Reading

*Joseph and Aseneth* 12.3 – 6, 8 – 10 (1<sup>st</sup> c. BCE)

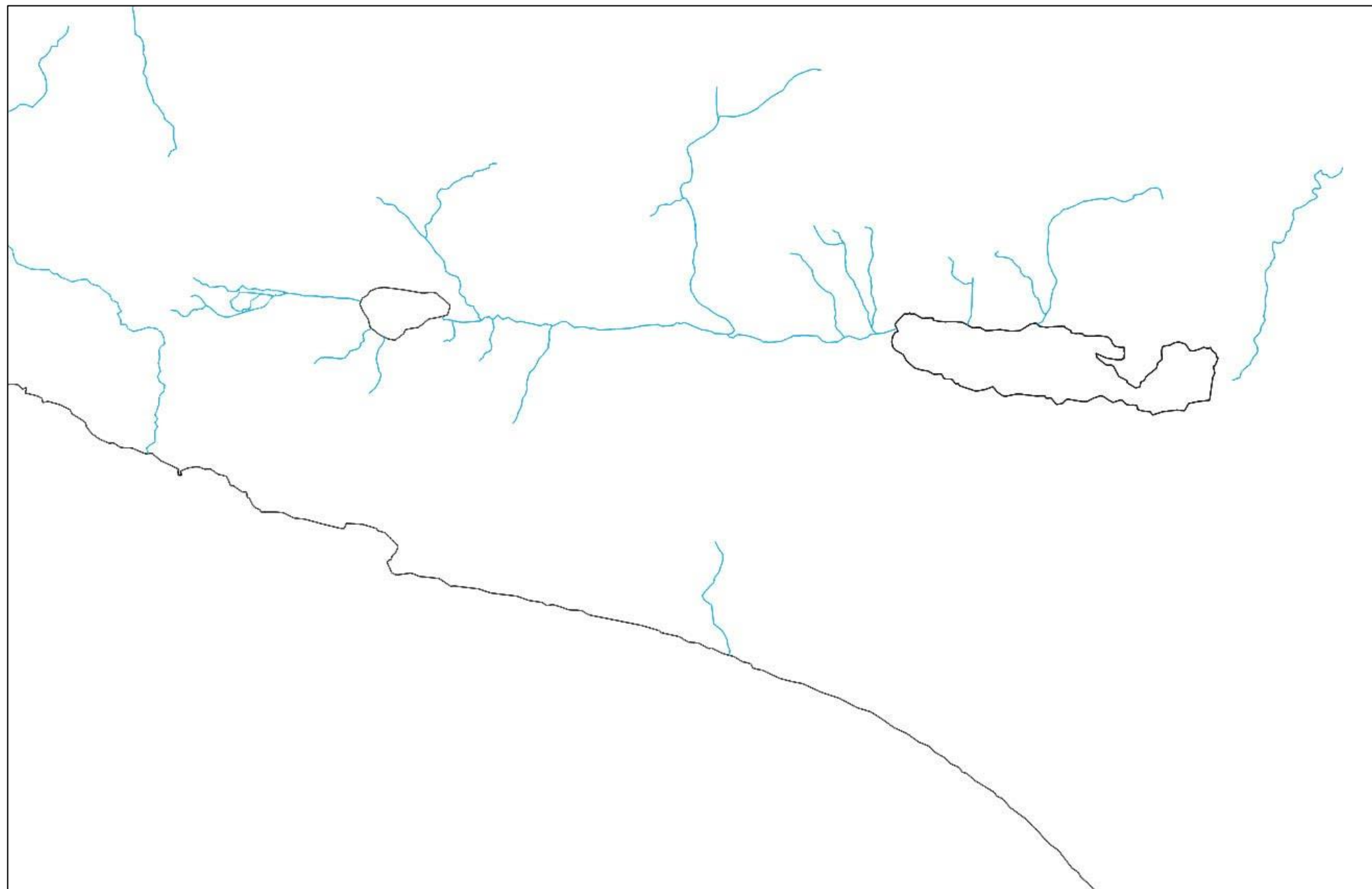
“With you I take refuge, Lord,  
and to you I will shout, Lord,  
to you I will pour out my supplication,  
to you **I will confess my sins**,  
and to you I will reveal my lawless deeds.  
Spare me, Lord,  
Because I have sinned much before you,  
I have committed **lawlessness** and  
**irreverence**,  
and have said wicked and unspeakable things  
before you.  
My mouth is **defiled** from the **sacrifices of the  
idols** and from **the tables** of the Egyptians.

**I have sinned**, Lord,  
before you I have sinned in much  
ignorance, and have worshipped dead  
and dumb idols....  
With you **I take refuge**, Lord,  
and to you I bring my supplication,  
And to you I will shout.  
For just as **a little child** who is afraid  
flees to **his father**, and the father,  
stretching out his arms, snatches him off  
the ground and puts his arms around  
him...  
likewise you too, Lord, **stretch out your  
hands** upon me as **a child-loving father**,  
and **snatch me off the earth**.”

# Introduction

- Why are we studying the Jewish background of the New Testament?
  - Context – meaning is grounded in the original audience
  - Submission to the Word – danger of reading our own anachronisms into Scripture
  - Worship of God - called to worship with our whole being, including the mind

*We want to grow a deeper relationship with God through encountering the Bible!*





# Mt. Hermon



9,232' High

Springtime



# Mt. Hermon



Summer



# Caesarea Philippi



1<sup>st</sup> c. CE Roman  
City



# Caesarea Philippi

Grotto of Pan  
(cave leads to the  
Underworld)





# Caesarea Philippi

Grotto of  
Pan



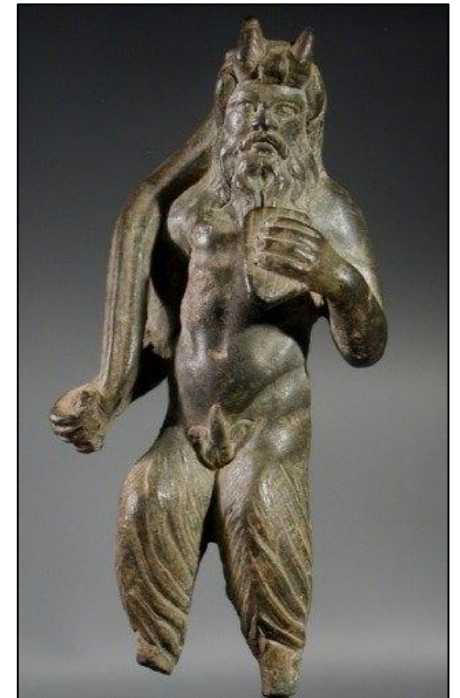
Location of  
temple and  
worship niches  
with statues of  
Pan



# Caesarea Philippi



Worship niches  
with statues of  
Pan



Pan – half goat, half  
man, symbol of fertility

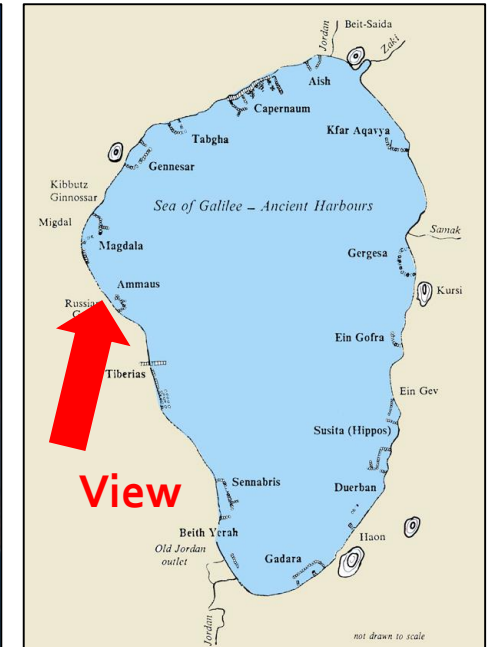


# Sea of Galilee



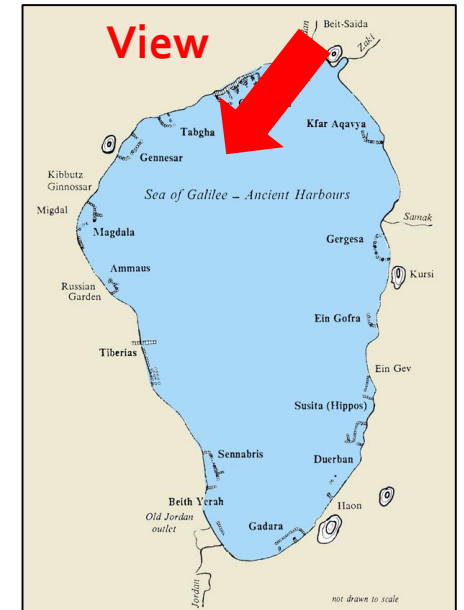


# Sea of Galilee

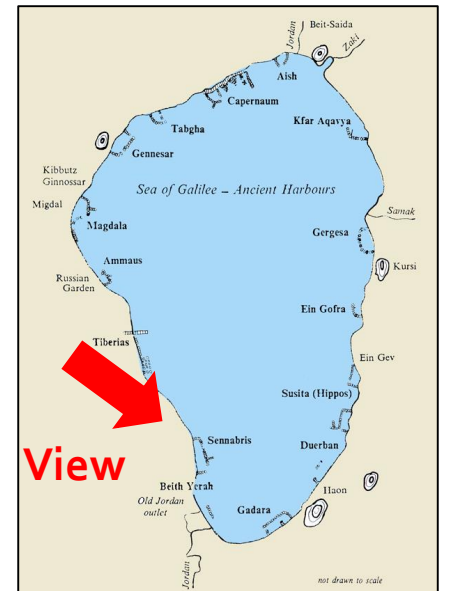




# Sea of Galilee



# Sea of Galilee





# Study Passage: Mark 5:1 - 20

- Where did the passage take place?
- Who are the characters in the passage (don't forget the non-human characters!)?
- What information can you gather about the region based on the story?
- What was the response of the inhabitants to Jesus when he did the miracle? Why?





# Nazareth



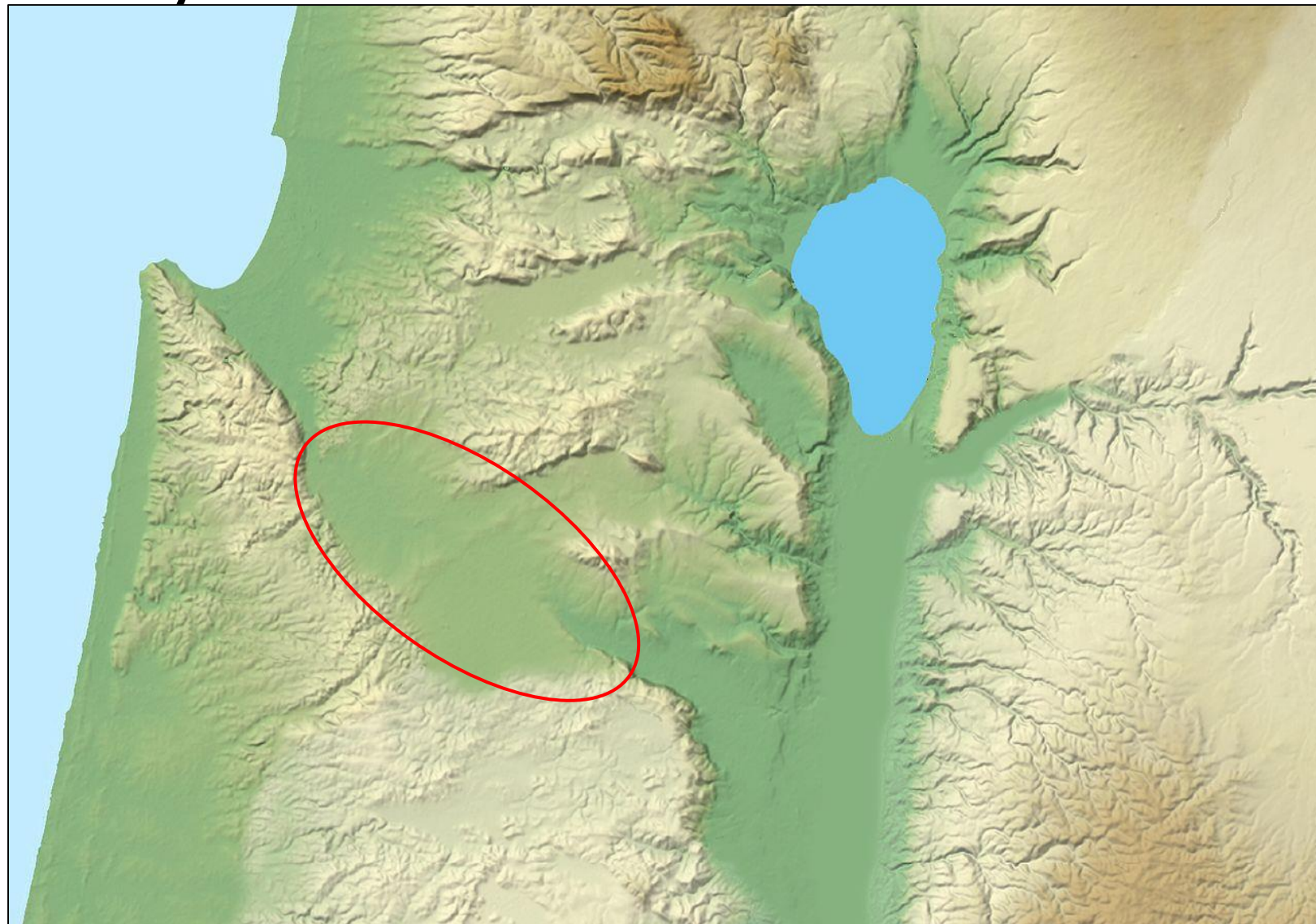


# Nazareth



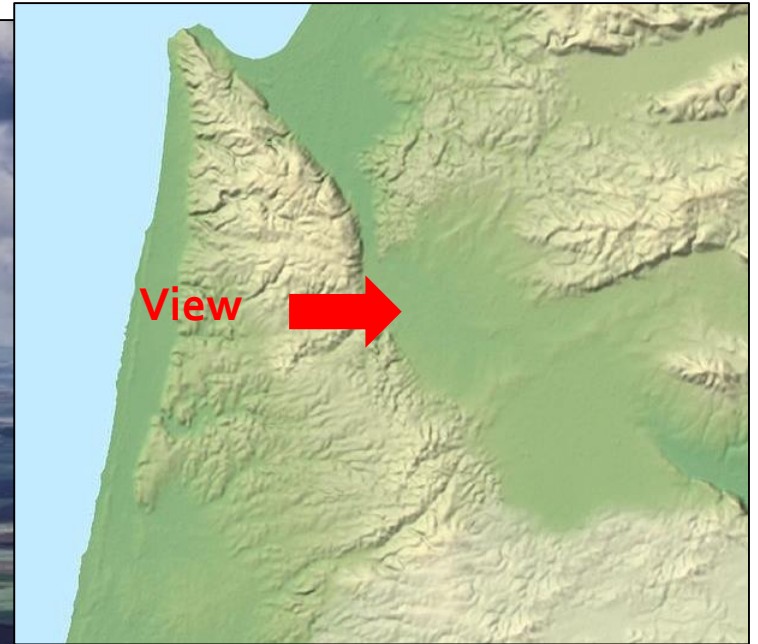


# Jezreel Valley





# Jezreel Valley





# Central Plateau





# Central Plateau





# Central Plateau





# Small Group Discussion: Psalm 22

- What major image is presented to describe God?
- What does this image bring to your mind?
- What is the reality of being a shepherd in this area like?
- What does the passage's contrast with reality say about how they see God?



# Small Group Discussion: Psalm 22





# Judean Wilderness



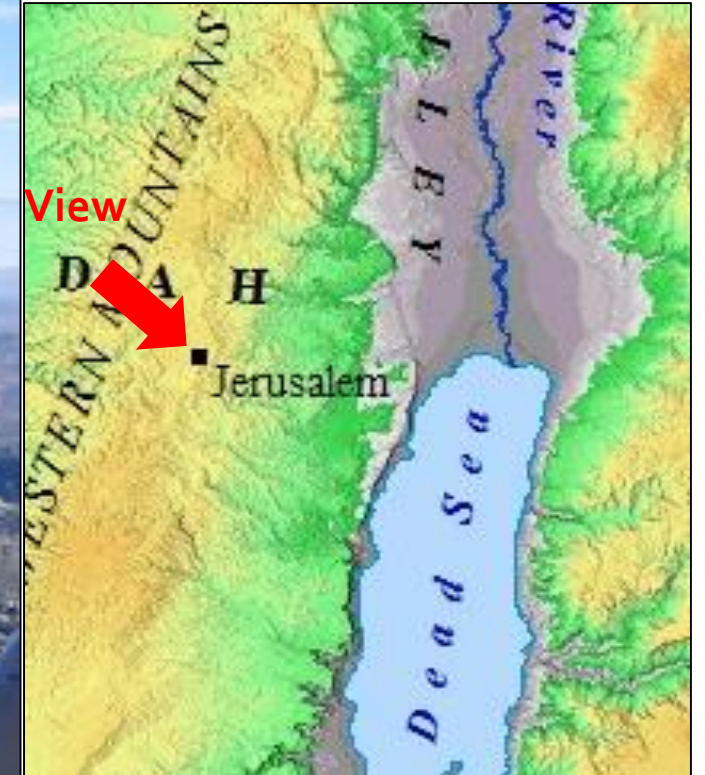


# Judean Wilderness





# Judean Wilderness



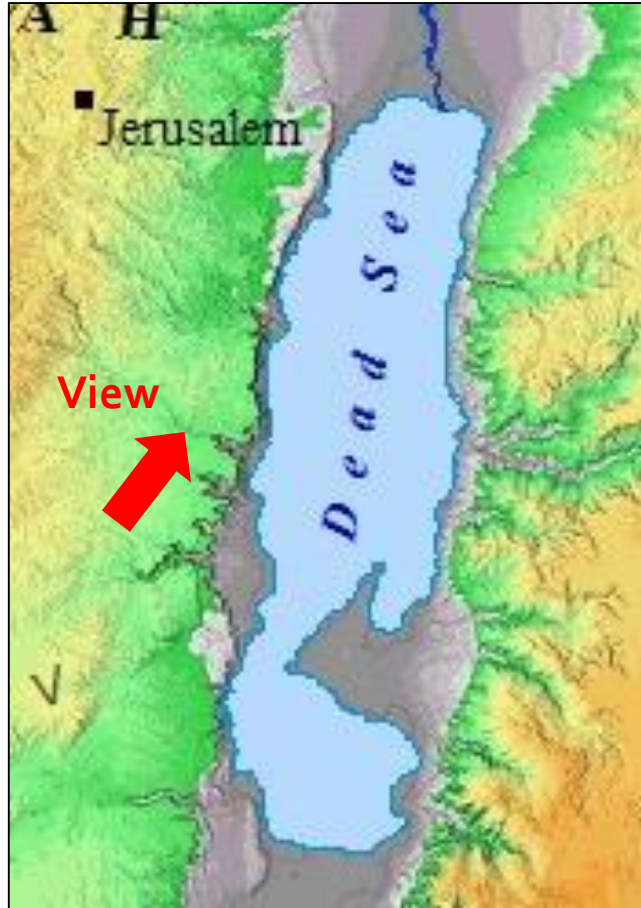


# Dead Sea





# Dead Sea



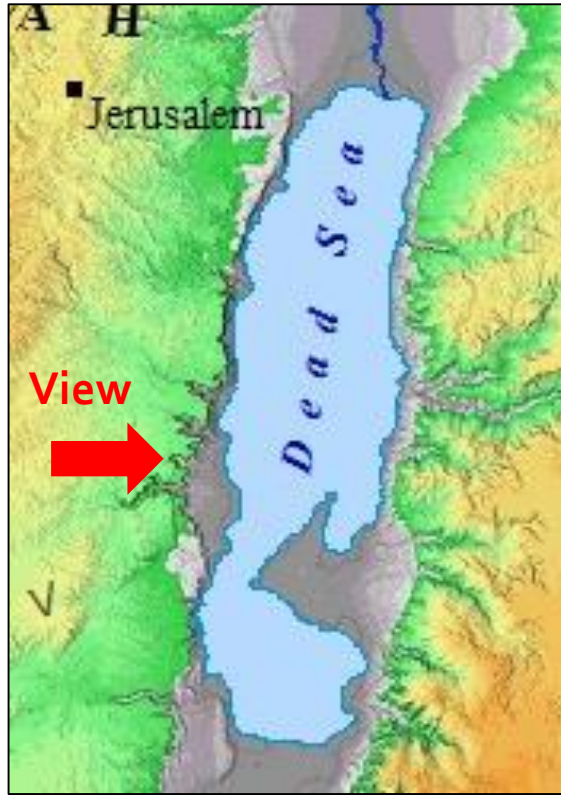


# Dead Sea





# Dead Sea





# Dead Sea



One of several water cisterns on Masada – carved out of mountain and lined w/ waterproof plaster



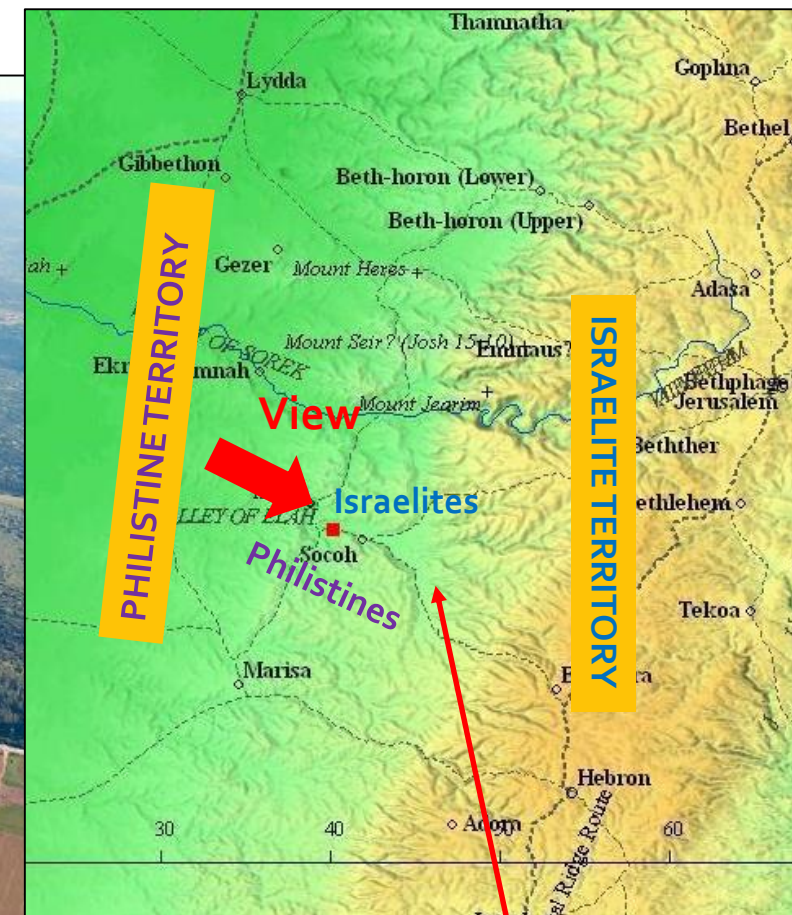
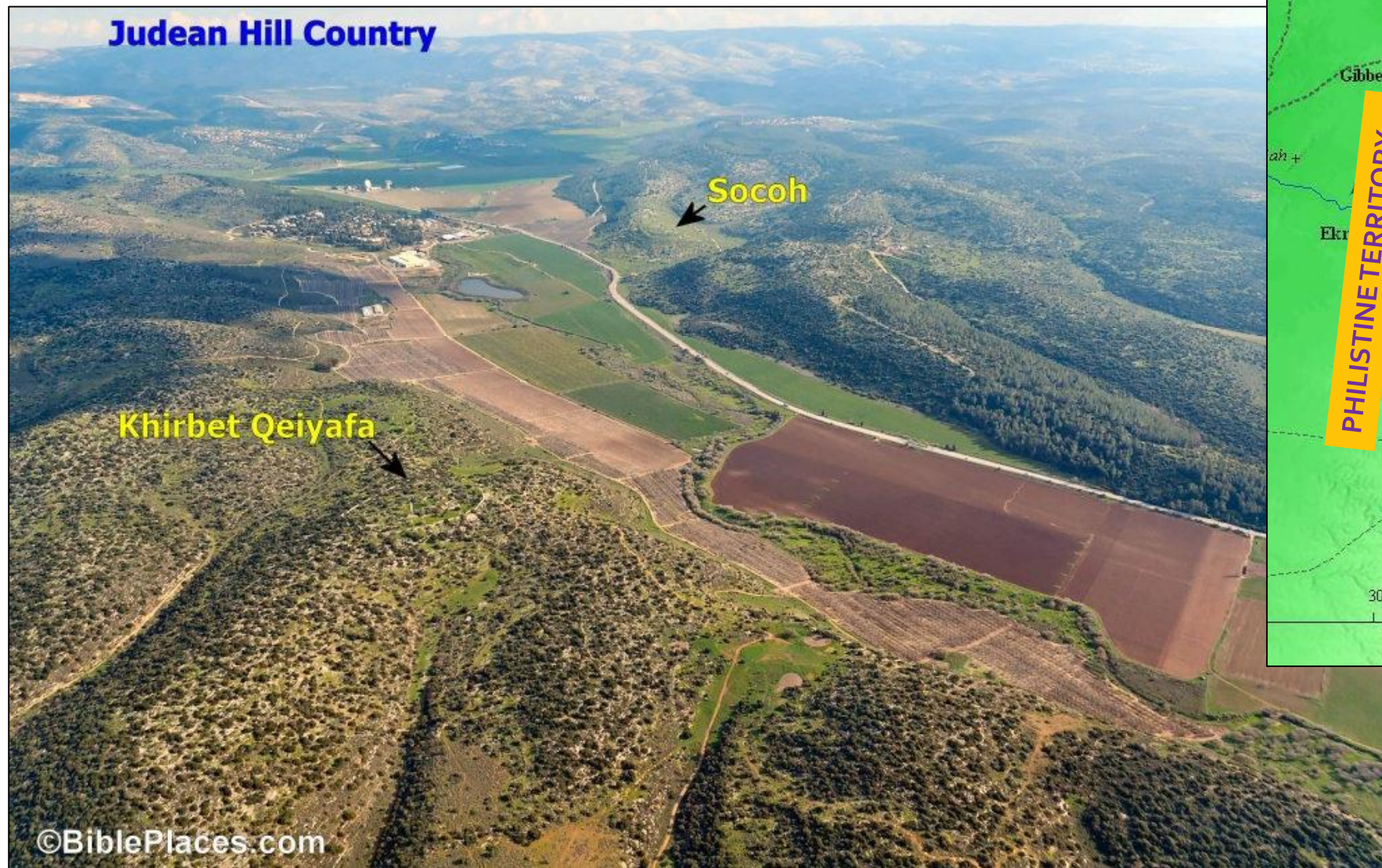


# Hill Country / Shephelah





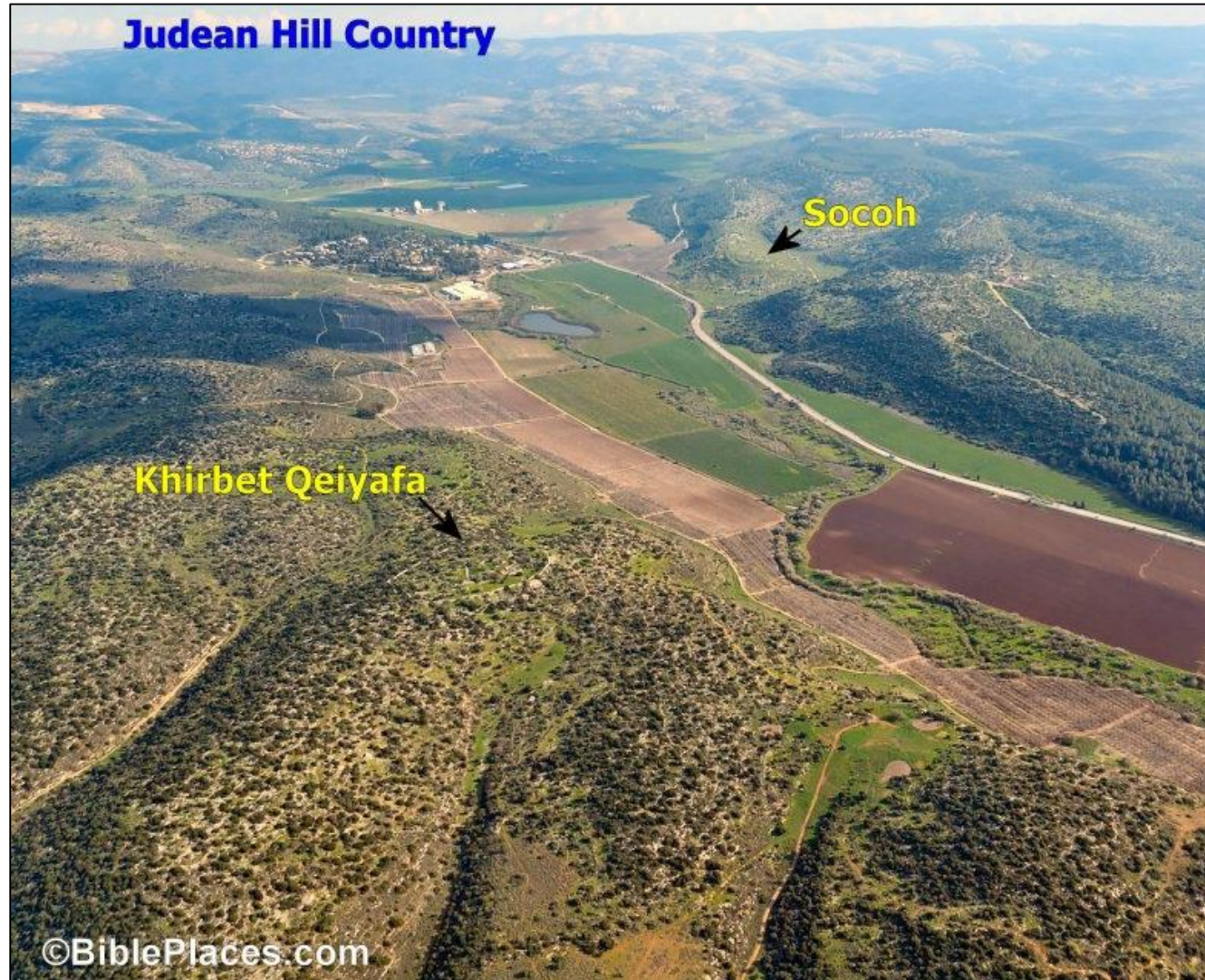
# Hill Country / Shephelah



Valley of Elah is natural moat / defense

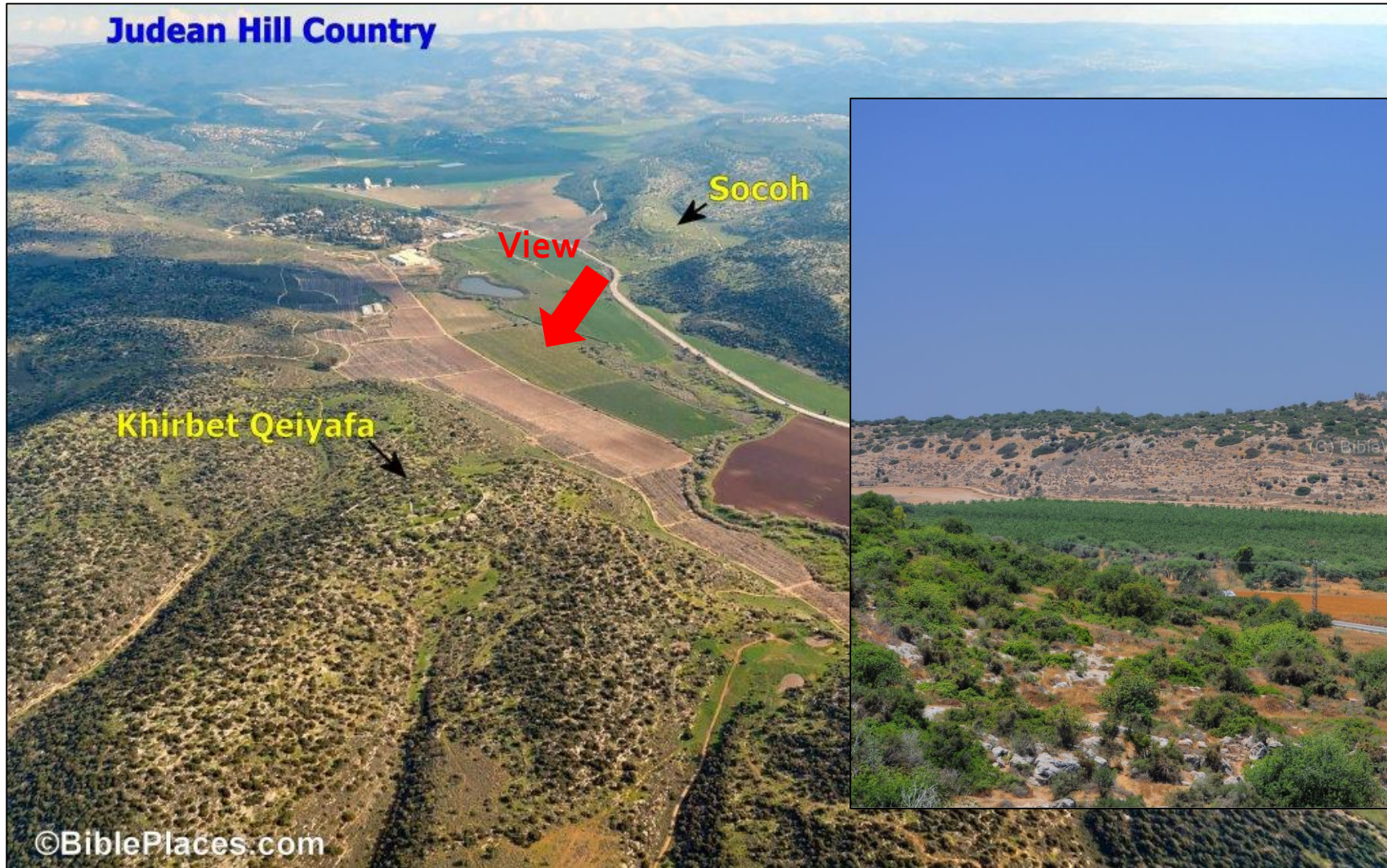


# Hill Country / Shephelah



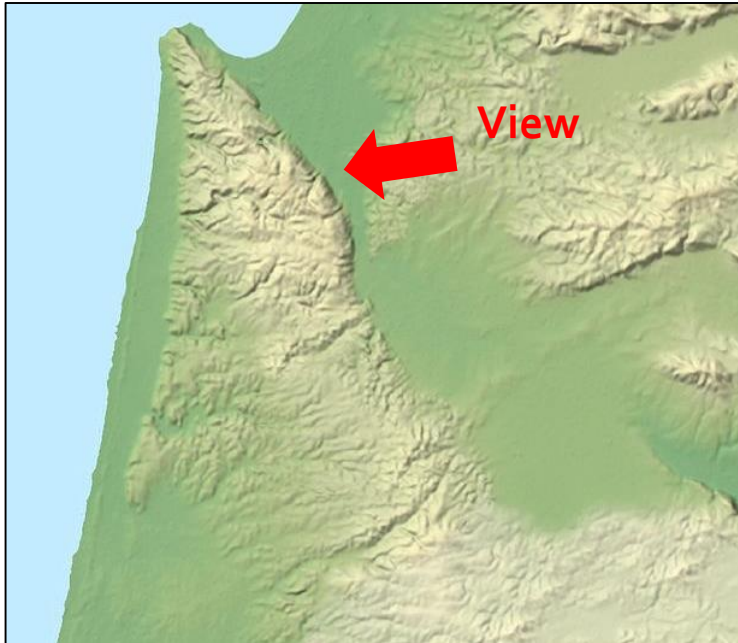


# Hill Country / Shephelah



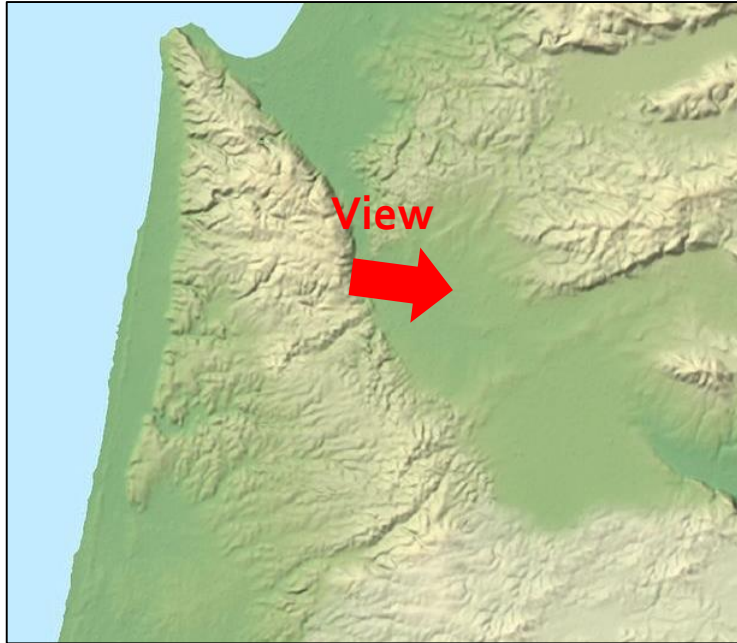


# Mt. Carmel





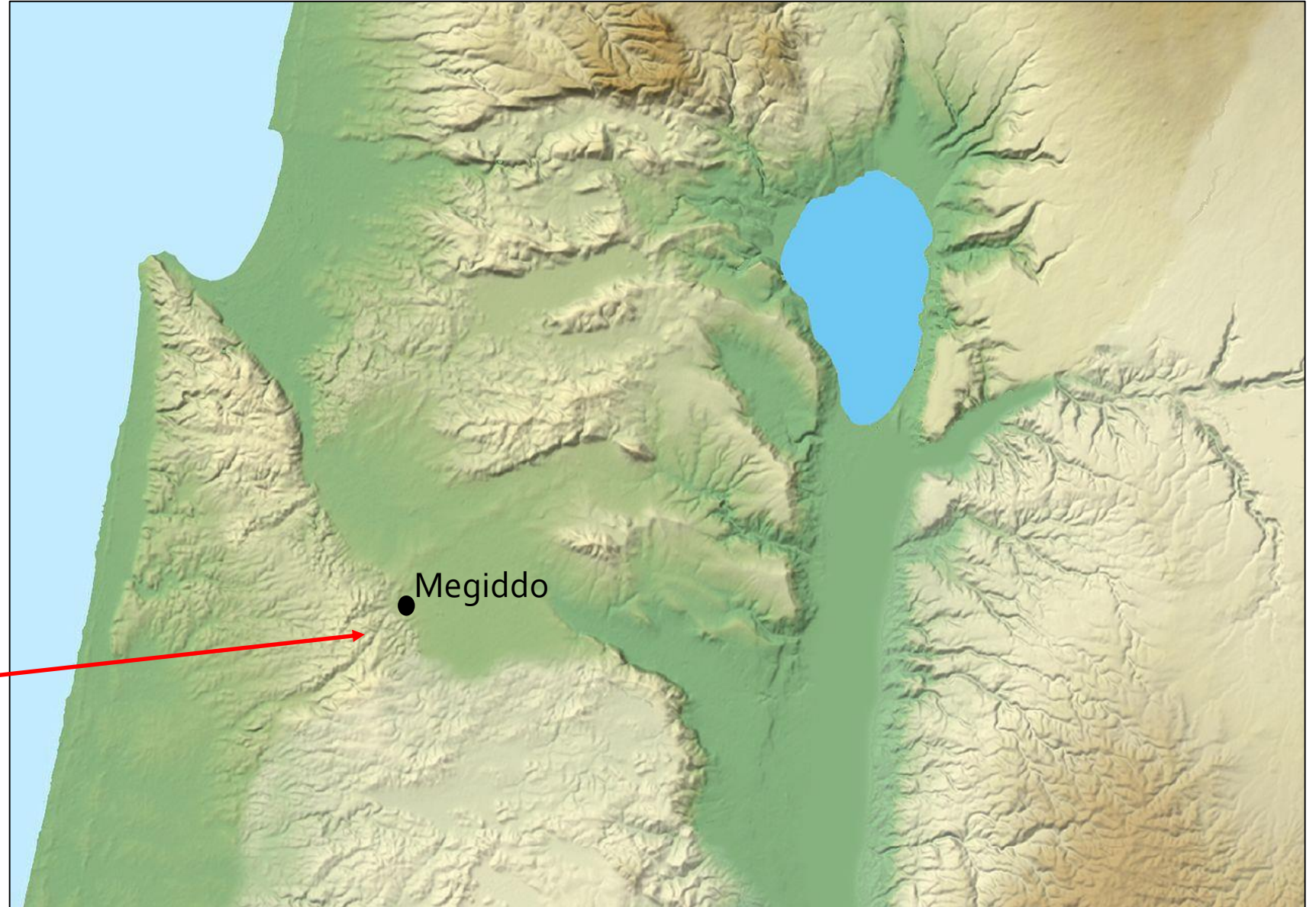
# Mt. Carmel





# Mt. Carmel

Aruna Pass to Megiddo





# Mt. Carmel

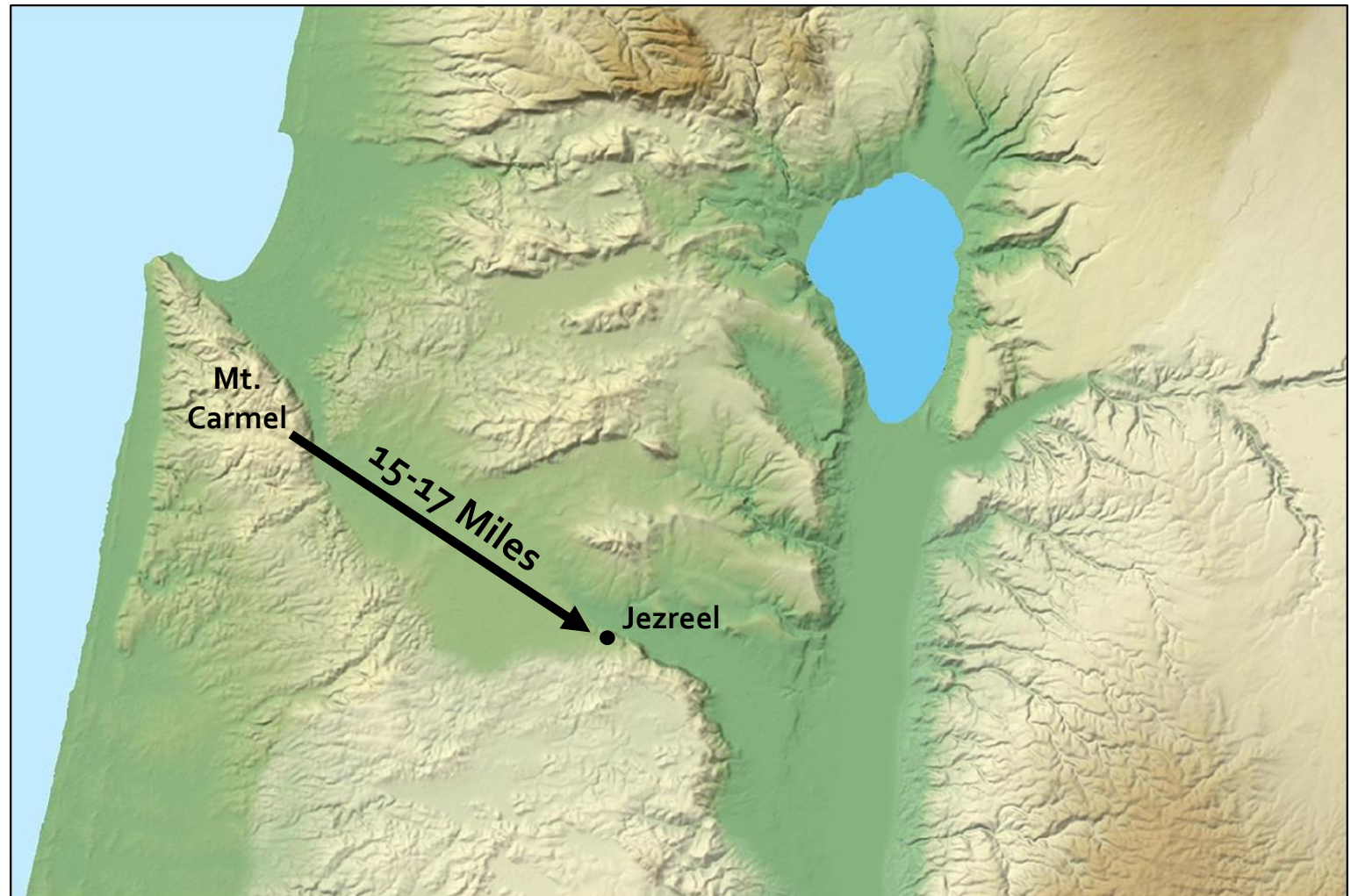


Aruna Pass (late 19<sup>th</sup>, early 20<sup>th</sup> century) – imagine putting an army of 10,000 soldiers plus chariots through this one-lane goat path!



# Small Group Discussion: 1 Kings 18:41-46

- How were Ahab and Elijah traveling?
- What were the weather conditions?
- What route did Elijah take to Jezreel? Ahab?
- How does this fact affect Elijah's "supernatural speed?"





# Today's Takeaways

- The land has a big influence on the narrative of the Bible
- While the land itself is small, it has huge differences in geology/geography
- In order to properly understand some stories, we need to understand the location and the cultural assumptions of the place
- Three ways the land influences the Bible:
  - Ethnic or political boundaries
  - Cultural themes
  - Helps ground our interpretation



# Next Week's Homework

- Read 2 Chronicles 30:1 – 31:1
- What does this passage tell us about the worship of *YHWH* in Israel & Judah at the time?

Seal of King Hezekiah – notice Egyptian symbols

